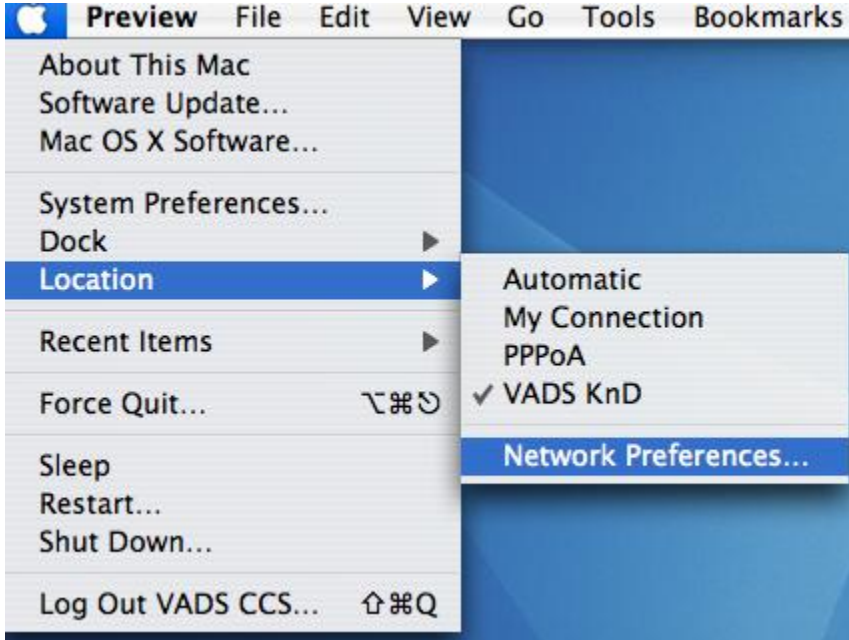
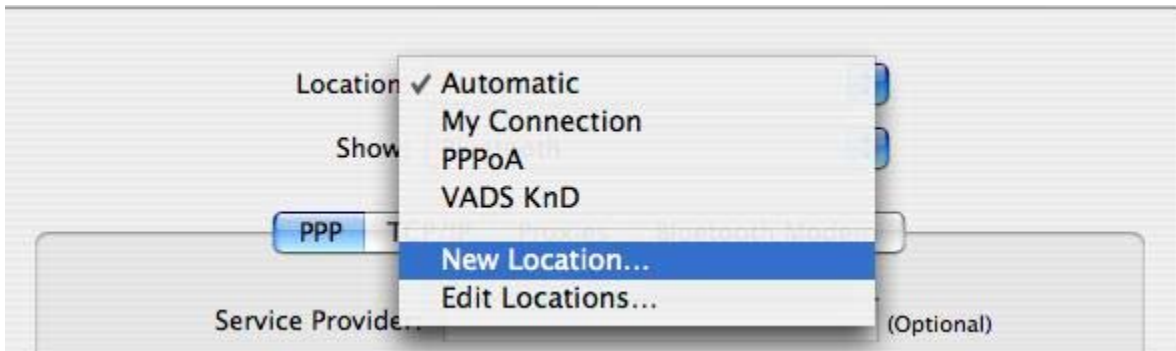


# OSX Dialer Broadband

1. From the Apple menu, choose Location and then choose Network Preferences.



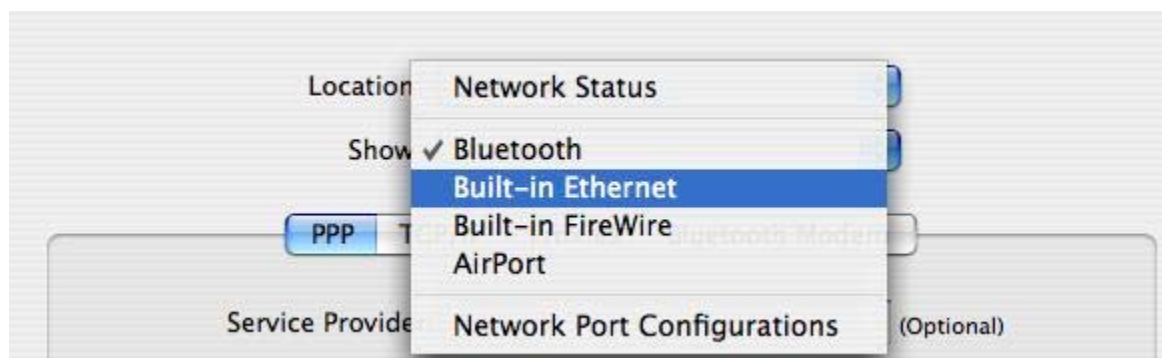
2. From the Network Preferences, choose New Location.



3. Name the New Location as **SentralFon**.



4. Set the show option as "**Built - In - Ethernet**".



5. Then click PPPoE tab first. Tick on the "Connect using PPPoE". Then key in the Username and Password. And then advice user to tick save password and show PPPoE status in Menu Bar.

Location:

Show:

TCP/IP **PPPoE** AppleTalk Proxies Ethernet

Connect using PPPoE

Service Provider:  (Optional)

Account Name:

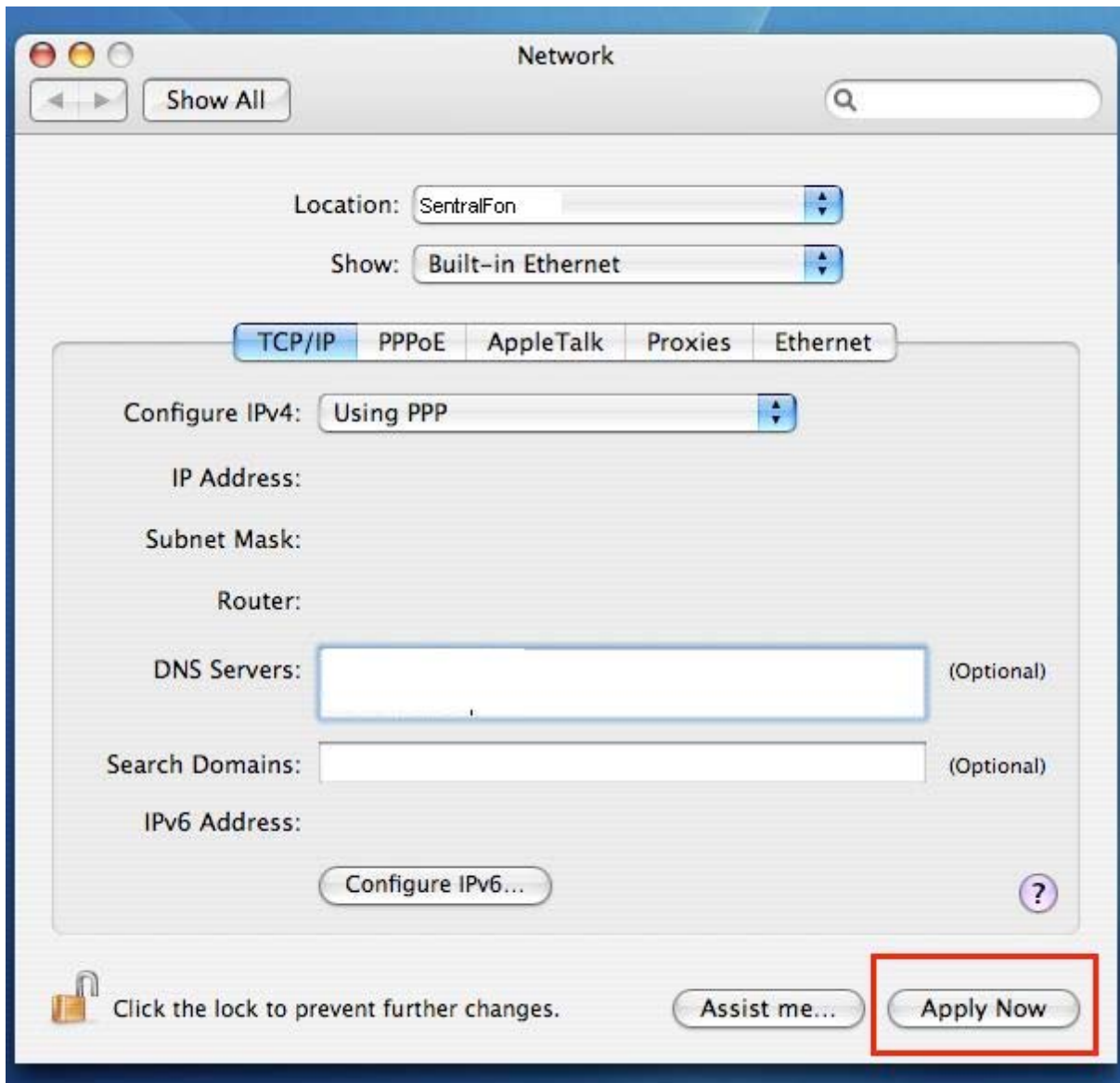
Password:

PPPoE Service Name:  (Optional)

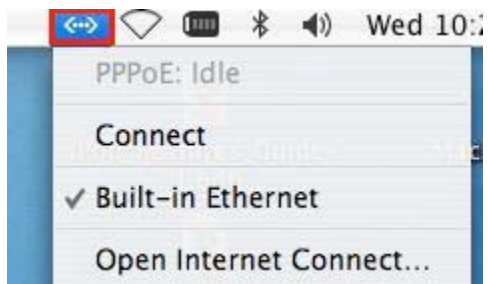
Save password  
Checking this box allows all users of this computer to access this Internet account without entering a password.

Show PPPoE status in menu bar

6. Then Click the TCP/IP tab. Choose PPP option from the Configure pop-up menu. Then type the Domain Name Server addresses in the matching field as shown in the image below. Click Apply Now.



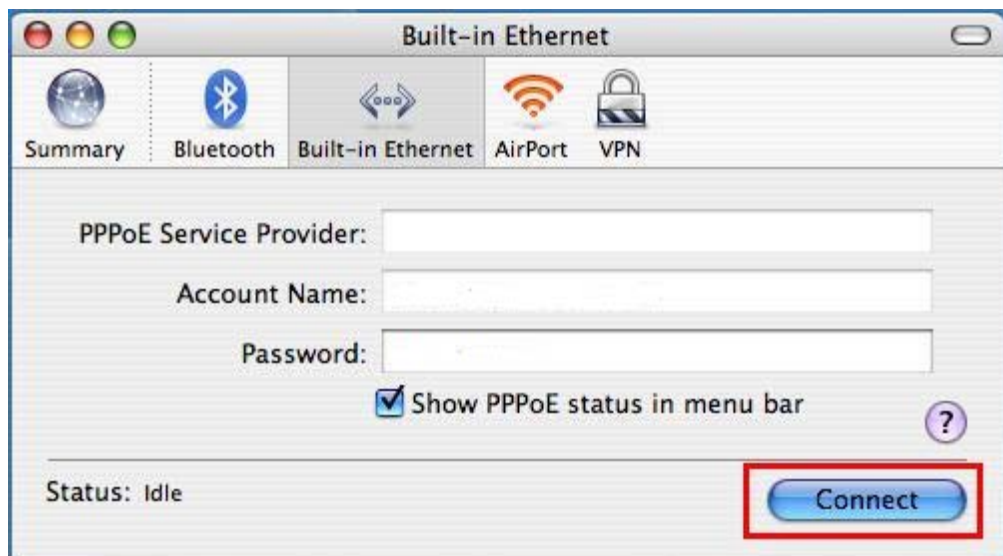
7. Then click on the Internet Connection symbol on the top right of menu bar.



8. Click on the "Open Internet Connect...".



9. Then a Pop - Up menu will appear. Check the Account Name and then click "Connect".



10. Now the internet connection is up and ready to use.