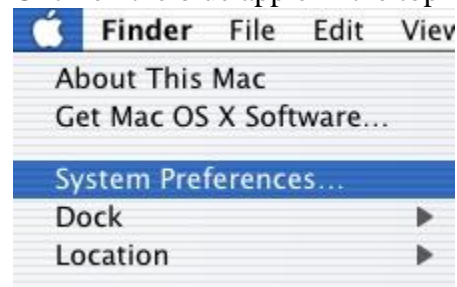


## PPPoE Setup On Mac OS X (Tiger)

Click on the blue apple in the top left corner and choose System Preference



In System Preferences choose Network



Make sure the settings are as follow

Location: Automatic (they may have named it something different)

Show: Built-in Ethernet

Click on the PPPoE tab

Make sure there is a check in "Connect using PPPoE"

Service Provider: ( Leave it Blank)

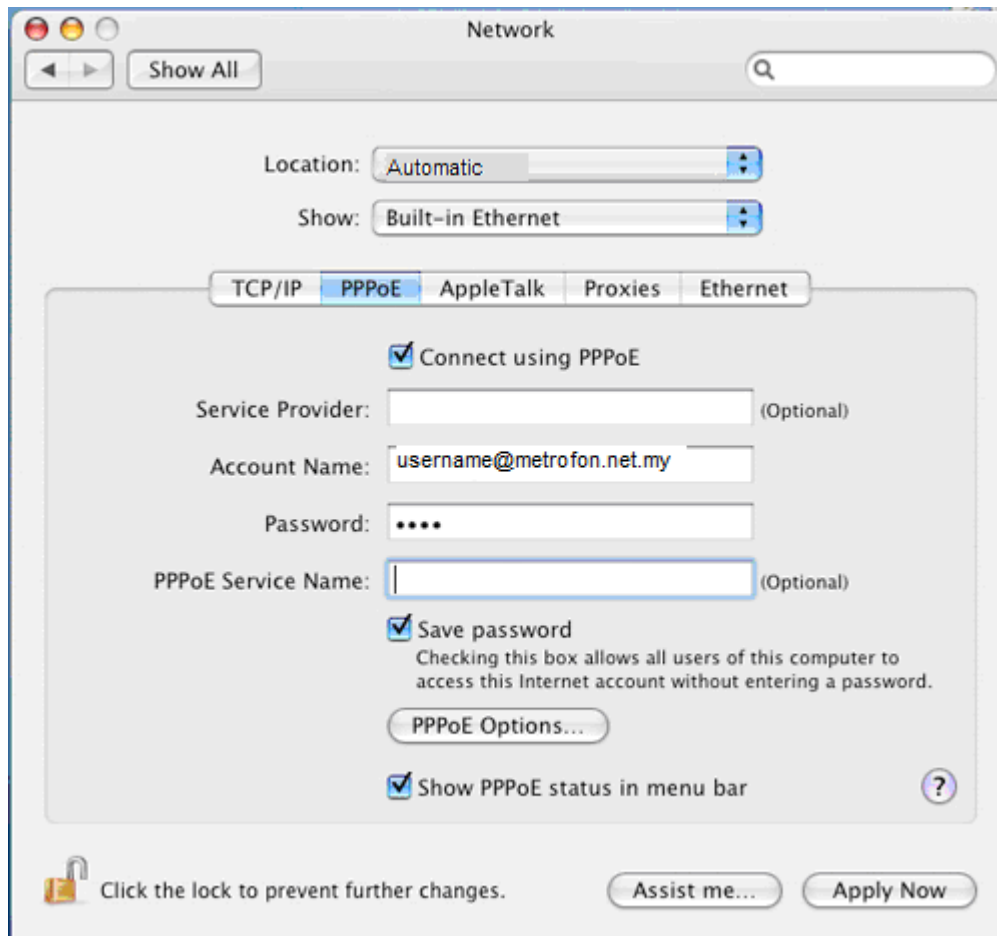
Account Name: [username@metrofon.net.my](mailto:username@metrofon.net.my)


Password: their : password

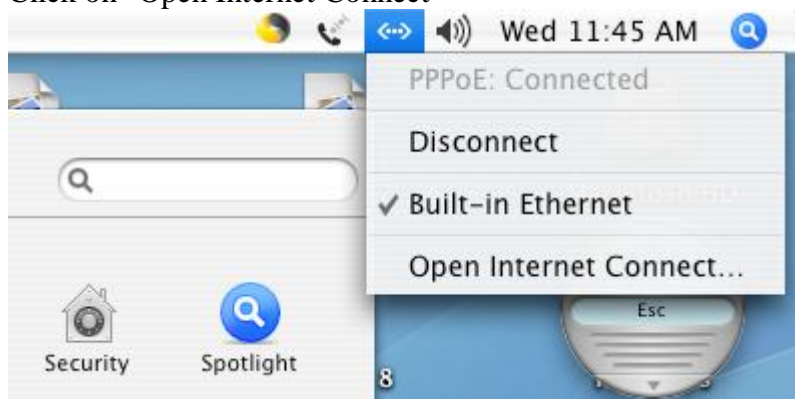
Make sure there is a check in "Save Password"

Make sure this is also a check in "Show PPPoE status in menu bar"

Click on "Apply Now" and close the Network window



In the top right corner, choose the PPPoE Status icon   
Click on "Open Internet Connect"



Make sure all the information is correct and hit "Connect"

Built-in Ethernet

Summary Internal Modem Built-in Ethernet VPN

PPPoE Service Provider:

Account Name:

Password:

Show PPPoE status in menu bar ?

Status: Idle Connect